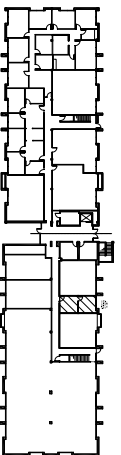


CALCULATION LINES HAVE BEEN TAKEN TO TENANT SIDE OF PUBLIC CORRIDOR, TENANT SIDE OF CORE WALLS, AND INSIDE SURFACE OF DOMINANT PORTION OF EXTERIOR WALL. RENTABLE FACTOR IS 1.1312 AS PREVIOUSLY ESTABLISHED BY OTHERS. idGROUP HAS NOT BEEN AUTHORIZED TO CONFIRM CODE COMPLIANCE.



KEY PLAN
NOT TO SCALE



AVAILABLE
SUITE 160 328 RSF

CONCOURSE OFFICE PARK

6350 LBJ FREEWAY

DALLAS, TEXAS

For Leasing Information Contact:

Jeff Anderson, 972.774.2522
jeff_anderson@transwestern.net

Matt Hurlbut, 972.774.2532
matt_hurlbut@transwestern.net



TRANSWESTERN

The Performance Advantage in Real Estate